



**SECTIONS**

Est. 2008



# SECTIONS COMPANY PROFILE

[www.sectionslimited.com](http://www.sectionslimited.com)

PROCUREMENT CONSULTANCY

QUANTITY SURVEYING &  
CONSTRUCTION ECONOMICS

FACILITY & PROJECT MANAGEMENT

DESIGN + BUILD

CIVIL & STRUCTURAL ENGINEERING SERVICES

OIL & GAS SERVICES

MECHANICAL ENGINEERING SERVICES

## TABLE OF CONTENT

04	About us
08	Skills & Capabilities
12	Expertise and Interest
14	Industry Sector Experience
15	Our Track Record
16	Resumes of Management
21	Resumes of Technical Staff
22	Organizational Structure
23	Quality Policy
25	Statement, Commitment and Policy on Health, Security, Safety and the Environment
27	Our Projects
42	Company Registration Documents
47	Corporate Information

# ABOUT US

---



**SECTIONS**

Est. 2008



SECTIONS Limited is a professional service and work firm with the aim of helping public, private sector and non-governmental Institutions to address the challenges, opportunities of the globalized and digitally networked world.

The firm, founded in May 2008, has provided clients with solutions for Systems and Infrastructure that employ a mastery of technology with technical program management to achieve successful project implementation. Combining expertise in program management, powerful budget modeling, detailed construction documents, and thorough construction administration, we incorporate technology designs into buildings that help our Clients' operations to succeed.

SECTIONS Limited is an international consultancy firm providing planning advice and project management within the construction industry. We assist with the planning, programming, monitoring

and the execution of all types of construction projects on a short or long-term basis.

The professional expertise we offer covers New Construction, Redevelopment, Relocations, Contract Administration, Oil and Gas Services and Facility Management practices in the construction industry.

At SECTIONS we concentrate and enhance the importance and criticality of open communication between all participating parties to achieve a desired conclusion, and the ultimate success of the project as a whole.

# SKILLS & CAPABILITIES

*We provide turnkey project consultancy services for detailed design and engineering, preparation of detailed Feasibility Studies and construction supervision up to commercial trial production.*

*We have our own pool of expert technical personnel to carry out different engineering assignments for providing turnkey project consultancy services.*



**SECTIONS**

Est. 2008

*What makes Sections exceptional from other firms is our high level of professionalism in what we do and our skills and capabilities which include;*

## PROCUREMENT CONSULTANCY

Experts in procurement of Goods, Works and Services in the construction, Oil and gas industry.

## QUANTITY SURVEYING & CONSTRUCTION ECONOMICS

Preparation of Bills of Quantities, tender documentation, tender evaluations, cost planning and project financial Statements.

## FACILITY & PROJECT MANAGEMENT

Facility Management which includes Detailed Project Report [DPR], Project Management and Feasibility studies, and Renovation/Rehabilitation works

## DESIGN + BUILD

Site supervision from planning to commission, Architectural Design, Detailed Production Drawings, site planning, and conservation, Interior Design and Graphics

## CIVIL & STRUCTURAL ENGINEERING SERVICES

Planning and Design of urban roads, highways, surface water drainage system, geodetic survey, soil investigation and foundation design, Planning and design of reinforced concrete building structures, structural steel building, timber structures and retaining structures.

## OIL & GAS SERVICES

Create value through the preparation of Bill of Quantities, Civil Engineering Works and logistics acquisitions with significant Oil & Gas potential. Operate in the majority of the Facility Managements of the Man Champs and the Procurement of Goods, Works and Services.

## MECHANICAL ENGINEERING SERVICES

Our mechanical engineering services involves all types of industrial gaskets, insulating kit gaskets, monolithic insulating joints and fasteners.

## PROCUREMENT CONSULTANCY

At SECTIONS, we believe that, to be able to accelerate bottom line results, businesses must first understand the function of procurement. Procurement is not just about finding suppliers, taking delivery and paying. Procurement is a strategic approach that requires companies to evaluate their spending's, determine their non-core activities and how the expenses in these activities impact on their expenditure

What SECTIONS seeks to assist its clients to avoid risk in terms of supply assurance, legal exposure, commercial issues, intellectual property protection, and fiscal matters; enhance sourcing and cost efficiencies; and establish better supplier relationships.



## QUANTITY SURVEYING & CONSTRUCTION ECONOMICS

SECTIONS have expertise in cost planning, cost estimates, costing, supplies needed during a construction project and the controlling of construction projects, measurement and estimating, construction legal studies and contracts administrative processes ..



## FACILITY & PROJECT MANAGEMENT

### Facility Management

In an ideal world, real estate executives manage facilities that operate flawlessly, freeing them to focus on real estate strategies that contribute to broader business and financial goals. In reality, many spend much of their work day managing routine facility management and maintenance tasks.

We know that the ideal can be real. We've shown some of the world's best-known companies and institutions how to operate facilities with maximum efficiency, safety and employee comfort-and dramatically reduce costs in the process. Our facility management services typically show clients a 20 percent or more drops in their overall facility operating expenses. What's more, we expose our clients to all the best practices we've honed while managing office, industrial, technical, manufacturing, critical environments and one-of-a-kind facilities in Ghana-often for the same company.

Our facility management professionals will apply their hands-on experience to drive maximum value and efficiency in your commercial property portfolio.

### Project Management

Are you owner or tenant, having new facility or build-out, relocation or expansion, single or multi-site, private or public sector, your real estate project management partner, anywhere in the world?

No other service provider has a comparable bench of professionals or the best practices, process controls and global experience that is put to work that addresses your real estate project management needs than Sections. You gain instant access to a team selected specifically to meet your objectives, and they come armed with expertise in interior build-out, move management, commercial real

estate operations, occupancy planning, engineering, architecture and construction. A dedicated project manager who serves as your single point of contact and accountability manages their collaborative approach. Of course, being the best means more than driving projects to on-time, on-budget completion. Our real estate project managers can quickly scale up or down to address your company's changing needs and the asset types in your portfolio. Whatever the scope, we'll work with you to set measurable goals and then achieve them together.



## DESIGN + BUILD

SECTIONS also design and build for its client at their own requirement with less or no charges on the design bills, as well as less percentage consultancy from our wide group of professionals.

We also have immersed experience in committee social infrastructure projects, such as community clinics, schools, accommodation, drainages and many more



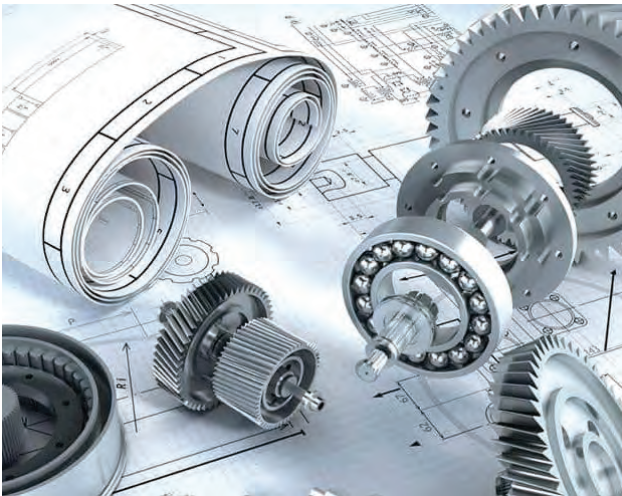
## CIVIL & STRUCTURAL ENGINEERING SERVICES

SECTIONS offers a wide range of civil and structural engineering design and project management services, combining our high level of experience within the civil and structural engineering field coupled with our flexibility to offer outstanding engineered solutions.

Our services are delivered by a team of dedicated professionals providing a high standard of design and analysis, using the latest computer software packages and the most up-to-date design standards. SECTIONS is competent in the design of Reinforced Concrete, Structural Steel, and Masonry.

## OIL & GAS SERVICES

In an industry where people have to rely on error free functioning of services or other civil engineering at subsea or surface, SECTIONS offers special civil engineering in the construction of man-camp for oil companies with the provision of facility management for the entire duration of the man camp.



## MECHANICAL ENGINEERING SERVICES

SECTIONS offers a wide range of Mechanical engineering services designed to match a variety of needs based on the industry, product and development cycle that you need assistance with and that fits specific needs of different industries.

Our experience of providing solution to different mechanical engineering challenges, and providing service from offshore delivery model and a presence that ensures close proximity to our customers make us the preferred engineering services partner for clients worldwide. Be it designing new products or solving complex engineering challenges, our multi-disciplinary team works closely with you to engineer solutions for a wide range of business requirements.

# EXPERTISE AND INTEREST

---

*Our areas of expertise and interest include: Our command of technology and the construction process keeps both „green field” and „fork-lift upgrade” projects on track, on budget, and aligned with strategic goals. We provide Goal definition, cost control, competitive vendor selection, and implementation oversight.*

EXPERTISE



**SECTIONS**

Est. 2008

## DESIGN

- Architectural Design
- Urban planning Design
- Interior Design
- Landscape Design & Landscape layout

## CIVIL/STRUCTURAL

- Reinforced concrete system
- Bridges
- Pre-fabricated steel structure
- Maintenance of Pre-fabricated Structure

## PROJECT MANAGEMENT & SUPERVISION

- Equipment & Material List Cost Estimation
- Bidder Tabulation
- Contractor/Supplier Invitation
- Bidding
- Technical & Financial Analysis
- Construction Supervision
- Testing Procedure Manuals
- Commission Systems
- Commission and Handover
- Maintenance, Operating Testing
- Supervision of Facilities Management
- Operation and Maintenance Strategies
- Training Programs
- Equipment and System Rehabilitation

## ELECTRICAL/MECHANICAL

- Power supply and distribution systems
- Security systems
- Lighting (Interior/ External) systems
- Sound systems
- Fire detection & Alarm systems
- Structure cabling systems
- Satellite, master antenna TV systems
- Mechanical transportation systems

## IN ADDITION TO

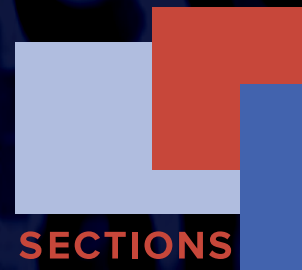
- Design Analysis Report
- Quantity Surveying and Cost Estimation
- Tender Analysis
- Renovation Works
- Environment Studies
- Feasibility Studies
- Hydraulic Studies
- Roads and Transportation Studies
- Power Studies
- Structural Studies
- Foundation and Supporting Studies
- Oil and Gas Services

# INDUSTRY SECTOR EXPERIENCE

---

*Our industry sector experience covers Metropolitan, Municipal, Districts and Gational government. National Department's safety, Trade & Industry, Oil & Gas, Public Service Administration and others.*

- **Construction Management Consultancy**
- **Pre-fabricated Man Champ**
- **Construction of Schools, Hospitals, Libraries Rural and Urban communities**
- **Consultancy Services for all Constructional Related Works**
- **Construction of Drains and Culverts in the Accra & Kumasi Metropolis**
- **Designs and construction of Residential Storey Domestic Buildings**
- **Material Schedule and Bill Preparation for Building Components, etc**
- **Building Maintenance and Extension Works**
- **Electrical (Underground fixing of Electrical Cables)**
- **Drainage & Plumbing (Removal of Blocks in Sewerage, Construction / Installation)**
- **Partitioning of Open Space into Offices (Plaster Board Walling)**
- **Renovation of Domestic, Commercial & Industrial Buildings and Houses**



**SECTIONS**

Est. 2008

# OUR TRACK RECORD

---



*Past and Present clients include:*

AVALON Development Ghana Limited  
ARCHITECT REGISTRATION COUNCIL (ARC)  
BLUE CREST COLLEGE (Formally NIIT)  
SIKKIM MUNICIPAL UNIVERSITY, Ghana  
DE-VERE Ghana  
MARCANTONINI S.R.L. (Italy)  
GHANA FORT AMSTERDAM ONLUS (Italy)  
AMICUS ONLUS (Italy)  
ENI Ghana  
SUPREME COURT OF GHANA (Judicial Service)  
UNICEF GHANA  
EDIF - Export & Development Investment Fund (Ghana)

INTERNATIONAL ROM LIMITED  
CONIWAS  
ACHIPRO LTD.  
WORLD VISION INTERNATIONAL  
KENPRIST VENTURES  
WALTONS LTD.  
STELLA ASANTE & ASSOCIATES  
DESIGNED FORUM  
GA DISTRICT ASSEMBLY  
ST. JO HNS BAPTIST CHURCH  
TEKOA ESTATE  
AFCONS INFRASTRUCTURE LIMITED

# RESUMES OF MANAGEMENT

---

*SECTIONS has Executive Directors as well as Non-Executive Directors with great expertise in the field of specialty of the company.*



**SECTIONS**

Est. 2008



## DANIEL OHENE

Chief Executive Director

### Qualifications & Affiliations

- MSc. Procurement Management (works, goods & services)
- BSc. (Honors') Quantity Surveying and Construction Economics
- H.N.D. Building Technology
- Member of CIOB, RICS, GHIS

### Experience

Daniel has over 18 years' experience in a wide range of residential, commercial, business, retail, industrial, civic and heritage projects. Daniel has been the Project Director on several landmark buildings in Ghana. Consultancy & designs since 2003, Daniel's focus is on estimating strategy, corporate relationships, professional service and team leadership.

### Employment History

- 2019 to Date Local Coordinator for European Union Funding for Fort Amsterdam, Ghana
- 2010 to date Country Director at Fort Amsterdam Onlus, Ghana
- 2008 to date Principal Partner at SECTIONS, Consultancy and Designs, Ghana
- 2003 to 2008 Director of Projects at Builtmen Consult Limited, Ghana
- 2001 to 2002 Architect Assistant at Ga District Assembly,

## LARRY T. DJANGMAH

Director of Projects

### Qualifications & Affiliations

- MSc. Civil / Structural Engineering/Building Science
- BSc (Hons) Physics (with Mathematics & Geology)
- MloD - Member, Institute of Directors, Ghana Construction Industry Training Board (CITB) UK

### Experience

Larry has 38 years of experience within the Land Acquisition, Organization of Design and Project Management Teams for Project and Infrastructure Delivery. Special interests in Controlled Sustainable Development, Project Management and Execution, Provision of Project Co-ordination and Project Management services to Construction Consultants, Civil Engineering and Building Contractors, Real Estate and Land Developers Investigation of energy sources for projects. Development of Project execution schedules and monitoring timelines to ensure projects are executed on schedule and within budget. Capacity building for Construction personnel is also provided on demand.

### Employment History

- 2011 - 2014:- NDPC / Development Policy Division
- 2007 - 2008:- Ghana Standards Authority/Technical Sub-Committee
- 2006- 2008:- Dangme-West District Assembly
- 2001 - 2006: GREDA - Ghana Real Estate Developers Association
- 2000 - 2001: Ghana Airports Company (Ghana Civil Aviation Authority)
- 2001 - 2002: DFID - UK Department for International Development

## NAANA AFUA KUMI-OHENE

Administration

### Qualifications & Affiliations

- MSc Developmental Finance (On going)
- BSc. Banking and Finance
- Diploma in Business Studies

### Training Programmes

- IDEA Software
- Microsoft Computer packages
- Strategic Planning Process
- Capacity Building Process

### Experience

Naana has over 7 years' working experience, versatile, analytical and hardworking possesses excellent communication, negotiation and problem solving skills. Experience has proven her abilities to manage and complete assigned duties and tasks to the highest standards, with a meticulous attention to detail and performance within agreed deadlines. And able to work with minimum supervision and have an ability to maintain calm under stressful environments. She have worked in positions where confidential information has to be guarded, with utmost integrity, which demonstrates her abilities to preserve confidential information and protect official information.

### Employment History

- Sept 2013 to Date, Internal Audit Administrator at Forestry Commission
- 2005 - 2009, Financial Administration and Reporting at Metaccept Co. Ltd
- 2004-2005, Client Database Officer at HopeSpring Foundation

## ERIC KWAME SIMPEH

Project Consultant

### Qualifications & Affiliations

- M Tech. Construction Management
- B Tech. Quantity Surveying
- H.N.D. Building Technology
- Member of Chartered Institute of Builders (CIOB)
- Member of Association of South African Quantity Surveyors (ASAQS)

### Experience

Kwame has over 18 years' experience in range of projects, commercial, industrial, civic, engineering projects and architectural structural drawing designs.

### Employment History

- August 2012 - Present Chief Engineer at Nimo Construction Limited
- March 2010 - July 2012 Part Time Lecturer at CPUT, Cape Town South Africa
- June 2006 - Dec 2008 Junior Quantity Surveyor at Global Construction (Pty) Ltd, Ghana
- March 2003 - May 2000 Site engineer at Nimo Construction Limited, Ghana.
- Sept 1999 - Dec 2001 Teacher at Vessel of Honour College, Ghana
- Sept 1996- Sept 1998 Draughtsman at Design Forum, Ghana

## VICTORIA AFERE-AMOASI

Finance/Administrative Officer

### Qualifications & Affiliations

- MBA. Accounting and Finance (Awaiting certificate)
- BSc. Banking and Finance

### Experience

Victoria has about 7 years' work experience in the areas of accounting, finance and administration. Areas of interest are taxation, bank reconciliation, account payable and receivable management, importation and exportation, preparation of financial statements (support services), audit, petty cash management and other office support duties. Victoria's interest is to ensure accountability, timely and accurate records to corporate institutions and business owners.

### Employment History

- Sept 2019 to April 2020, Accounting/Admin Associate at Daystar Power Group LTD
- March 2016 to August 2019, Accounts and Admin officer at Betonsa Ghana Limited
- October 2014 to September 2015, Customer service officer at Amenfiman Rural Bank
- 2013 to 2014, Office Assistant at National Commission for Civic Education

## DEBORAH SUONG SORY

Head of Design

### Qualifications & Affiliations

- M. Arch. Master of Architecture
- BSc. (Honors') Architecture

### Experience

Debbie has over 6 years' experience in a wide range of residential & commercial designs.

### Employment History

- 2009 to date Head of Designs at SECTIONS, Consultancy and Designs, Ghana
- 2009 to date Architectural Department, Ghana Health Service

## EDBERT NTUMY YEBOAH

Civil/Structural Engineer

### Qualifications & Affiliations

- BSc. Civil Engineering
- Cooperate Member of GhIE, No: - 6750

### Experience

Edbert has 16 years of experience within the Design, drafting and supervision of Structural Engineering works, Feasibility studies, Soil investigations, Tendering and procurement processes, Project management, Training, Supervision of design and working drawings by interns, draughtsman and students and young engineers.

### Employment History

- 2012 to Date, BLAZEMEN Consult Ltd.
- Aug. 2005 to 2072, Architectural and Engineering Services Ltd, AESL

## JACQUELINE OPOKU TWUMASI

Mechanical Engineer

### Qualifications & Affiliations

- MSc. Engineering and Management
- BSc. (Honors') Mechanical Engineering

### Experience

Jackie has over 8 years' experience in a wide range of experience in Development solutions for clients; assist in company participation in tender submissions, prepare technical instructions for assembly of tools, obtain all relevant documentation required for various tasks on job location; mobilization of resources for various projects; and project monitoring and evaluations.

### Employment History

- 2014 to date Associate Tech Professional at Halliburton International
- 2011-2014 Customer Support Officer at G&J Technical Services Ltd.
- 2010 - 2011 Service Advisors at CFAO Motors
- 2009 - 2010 Workshop Trainee at TOYOTA Ghana Ltd.

## SAMUEL KWADWO BOATENG

Project Engineer

### Qualifications & Affiliations

- MSc. Construction Management
- BSc. (Honors') Construction Technology & Management

### Experience

Samuel has experience over the last 12 years in the Construction (Building & Civil) and Mining industry as a Project Manager, Assistant Project Manager, Project Supervisor, Quantity Surveyor and a Safety Officer and believes in team work, he sets priorities and executes them on time has been his hall mark.

### Employment History

- Aug. 2014 - March, 2015, Jins Construction Ltd
- Jan. 2012 - June 2014, B&P Group Mining Company Limited
- 2007 - 2010 - Builders Accessories Ghana Limited.
- 2005- 2006 - A- Kon Consult

# RESUME OF TECHNICAL STAFF



Est. 2008

## PATIENCE OPOKU ABABIO

Monitoring & Evaluation of Projects

### Qualifications & Affiliations

- MA Development Management
- BA (Honors) Political Science

## DANIEL SABAAN LAMPTEY

Construction/HSSE Manager

### Qualifications & Affiliations

- BSc Construction Management

## EMMANUEL ODURO AGYARE

Site Engineer

### Qualifications & Affiliations

- Bachelor of Building Technology

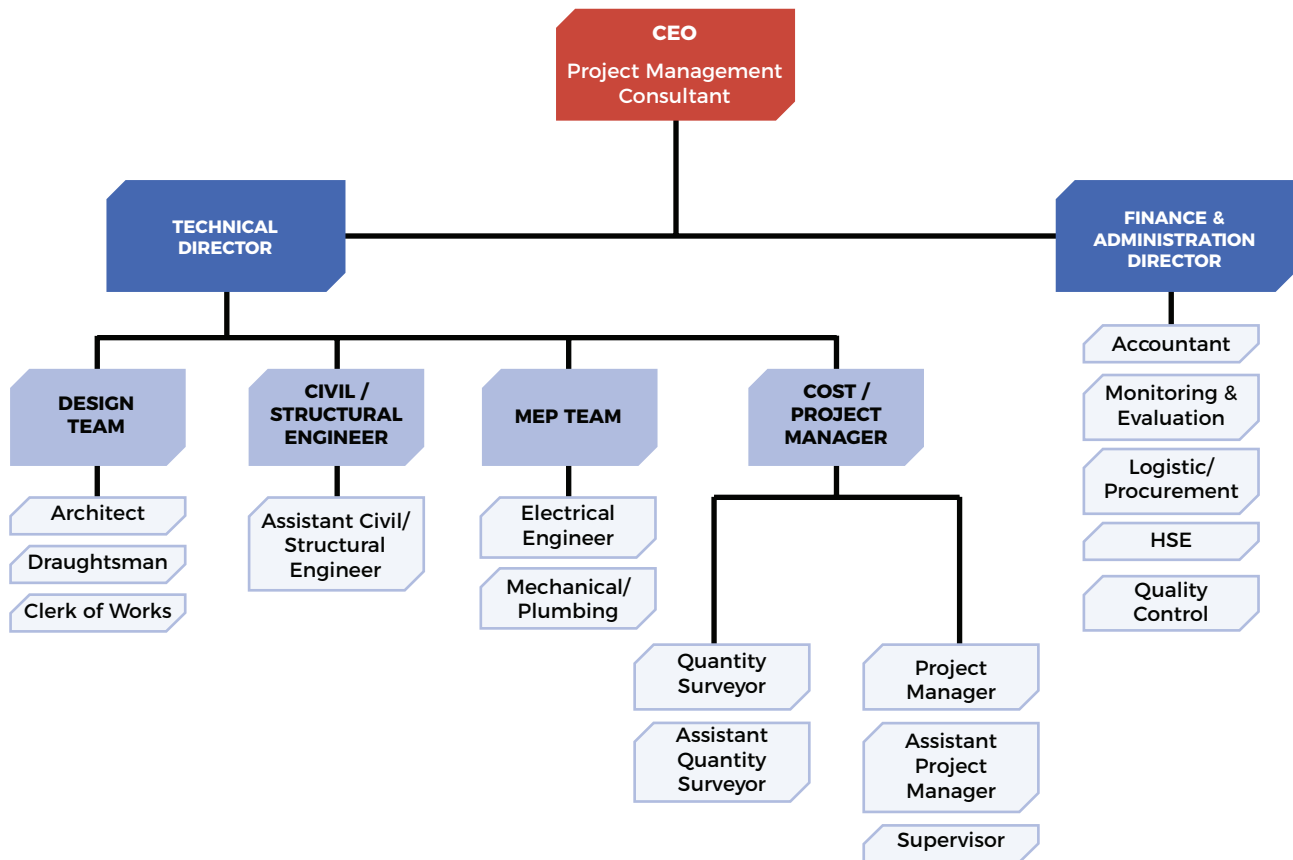
## COLLINS ODURO

Site Supervisor

### Qualifications & Affiliations

- Construction Technician 111

# PROJECT MANAGEMENT ORGANOGRAM



# QUALITY POLICY



MED

QUA



**SECTIONS**

Est. 2008



At SECTIONS, we all share the responsibility for continual improvement of our Quality Management Process and believe that the business support processes that we provide, supported by our Business Model and our Code of Ethics, will ensure the continual delivery of high quality products and services to our Clients.

Our Quality Management System provides the framework for continual improvement of our internal management processes and resources which will in turn add value for our clients through our business processes that support the services offered and delivered. In addition, our Quality Management System gives SECTIONS and its Clients the confidence that the provision of services and products will be delivered consistently to predetermined high standards worldwide.

## OUR MANAGEMENT SYSTEM

We are committed to quality, integrity and excellence in everything we do by:

Aligning the organization through priority setting and action plan building.

- Reinforcing network capabilities through training and supporting our employees.
- Monitoring our progress, identifying and closing gaps through indicators.
- Ensure sustainable progress through internal and external audits.

## OUR PRINCIPLES

- Client requirements can always be met.
- Company efficiency relies on individual competences and employee commitment.
- All processes are described concisely and employees are trained and encouraged.

- All processes shall be periodically reviewed for continuous improvement and streamlining.

## OUR COMMITMENTS

The entire line management is accountable for the implementation of this policy and shall remain committed to:

- Train, led by example, and guide employees in following processes and procedures.
- Continuously audit and improve operations
- Share Good Practices & Knowledge

By doing this, all SECTIONS employees will contribute to the first of our „Business Values“: Client focus. We commit all employees of SECTIONS to abide by ISO 9001-2008 and implement our policies and procedures in order to enhance our reputation as a client focused company.

STATEMENT,  
COMMITMENT  
AND POLICY ON  
HEALTH, SECURITY,  
SAFETY AND THE  
ENVIRONMENT

---



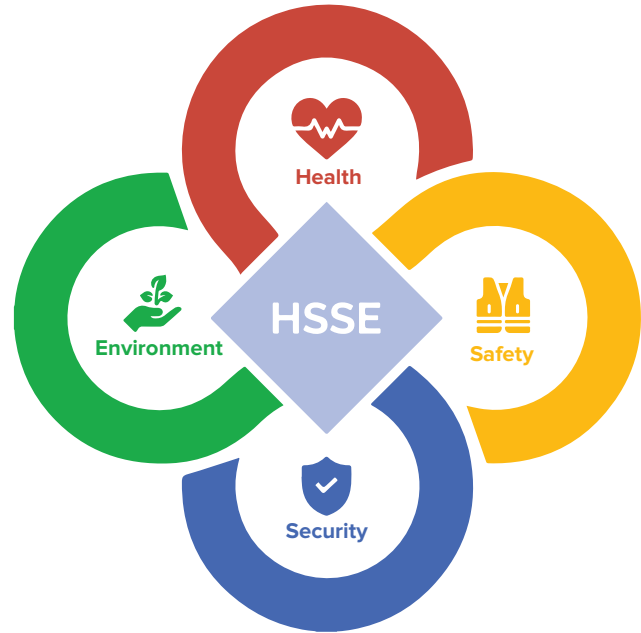
SECTIONS

Est. 2008

## STATEMENT

SECTIONS LIMITED Staff shall abide by all HSSE obligations defined in the HSSE MANUAL, and only through written agreement from SECTIONS LIMITED shall any sections deemed to be not applicable to the scope of WORKS to be performed by STAFF, be removed from the scope. It is SECTIONS LIMITED'S obligation to ensure that the APPLICABLE LAWS relating to HSSE are respected, complied with and monitored during the entire performance of the WORKS.

This shall include: Meeting the specified COMPANY HSSE Standards as referred to in the HSSE Manual. Performing the WORKS in accordance with GOOD ENGINEERING PRACTICE and established available industry practices for environmental performance.



## COMMITMENT

In SECTIONS, we are all committed to:

- Pursue the goal of no harm to people;
- Protect the environment;
- Use material and energy efficiently to provide our product and services;
- Respect our neighbors and contribute to the societies in which we operate;
- Develop energy resources, product and services consistent with these aims;
- Play a leading role in promoting best practice in our industries;
- Manage HSSE matters as any other critical business activity, and
- Promote a culture in which all employers share this commitment.

## POLICY

SECTIONS:

- Has a systematic approach to HSSE management design to ensure compliance with the law to achieve continuous performance improvement;
- Sets targets for improvement and measures, appraises and reports performance;
- Requires contractors to manage HSSE in line with this policy;
- Requires joint ventures under its operational control to apply this policy, and uses its influence to promote it in its other ventures;
- Engage effectively with neighbors and impacted communities; and
- Include HSSE performance in the appraisal of all staff and rewards accordingly.

# OUR PROJECTS

---



**SECTIONS**

Est. 2008

## CONSTRUCTION OF 30,000 SQUARE METER CAMPUS FOR ACADEMIC CITY COLLEGE

**Location:** Haatso, Accra, Ghana.

**Role:** Project Management Consultancy

**Date of Completion:** 2020



## CONSTRUCTION OF 30,000 SQUARE METER CAMPUS FOR ACADEMIC CITY COLLEGE

**Location:** Haatso, Accra, Ghana.

**Role:** Project Management Consultancy

**Date of Completion:** 2020



## AVIANTO WAREHOUSE

**Location:** South Industrial Area, Accra

**Role:** Project Management Consultancy

**Date of Completion:** 2020



## CONSTRUCTION OF 500 MAN CAMP

**Client:** AFCONS Infrastructure Limited

**Location:** Shai Hills, Accra

**Date of Completion:** 2017





## BATCHING PLANT CONSTRUCTION

**Client:** AFCONS Infrastructure Limited

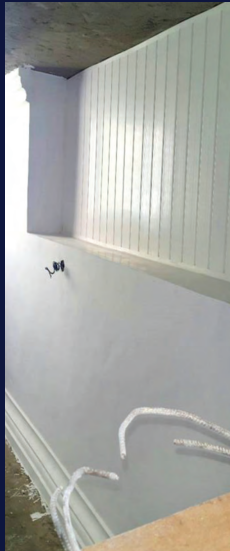


## OFFICE PARTITIONS

**Client:** Private Developer

**Location:** Greater Accra Region

**Date of Completion:** 2015/16



## OFFICE PARTITIONS

**Client:** DeVere Ghana

**Location:** Greater Accra Region

**Date of Completion:** 2014



## RENOVATION OF 2 CLASSROOM KINDERGARTEN BLOCK

**Client:** Fort Amsterdam Onlus, Italy

**Location:** Central Region, Ghana

**Date of Completion:** 2015



## CONSTRUCTION OF 2 CLASSROOM KINDERGARTEN BLOCK

**Client:** Fort Amsterdam Onlus, Italy

**Location:** Central Region, Ghana

**Date of Completion:** 2014



## CONSTRUCTION OF 2 CLASSROOM KINDERGARTEN BLOCK

**Client:** Ghana Education Service/Fort Amsterdam Onlus

**Location:** Fomena, Central region, Ghana

**Date of Completion:** 2012

BEFORE



AFTER



## CONSTRUCTION OF 6 CLASS ROOM, OFFICE TOILET FACILITIES

**Client:** Ghana Education Service/Fort Amsterdam Onlus

**Location:** Anomabo, Central region, Ghana

**Date of Completion:** 2011



## CONSTRUCTION OF 10 SEATER AQUA LATRINE

**Client:** ENI Ghana

**Location:** Western Region Ghana

**Date of Completion:** 2014



## CONSTRUCTION OF 20 SEATER KVIP

**Client:** ENI Ghana

**Location:** Ashanti Region Ghana

**Date of Completion:** 2013



## CONSTRUCTION OF CHPS COMPOUND (COMMUNITY CLINIC)

**Client:** Ghana Health Service/ENI Ghana

**Location:** Half Asini, Western Region, Ghana

**Date of Completion:** 2012



## CONSTRUCTION OF LATRINE

**Client:** Ghana Health Service/ENI Ghana

**Location:** Half Asini, Western Region, Ghana

**Date of Completion:** 2012



## REHABILITATION OF OFFICE FACILITIES

**Client:** Amicus Onlus

**Location:** Asylum Down, Accra, Ghana

**Date of Completion:** 2014



## CONSTRUCTION OF COMMUNITY CLINIC LABORATORY

**Client:** Amicus Onlus

**Location:** Briwa, Central Region, Ghana

**Date of Completion:** 2009



## CONSTRUCTION OF 2 BEDROOM APARTMENTS, 8 NUMBER

**Client:** Private Developer

**Location:** Greater Accra Region, Ghana

**Date of Completion:** 2014



## DEMOLITION WORKS

**Client:** Grand Pacific Ltd.

**Location:** Greater Accra Region, Ghana

**Date of Completion:** 2015





## ROOF REPAIR WORKS

**Client:** Private Developer

**Location:** Greater Accra Region, Ghana

**Date of Completion:** 2015



## CONSTRUCTION OF 5 BEDROOM AND 2 BEDROOM OUT HOUSE

**Client:** Mr. & Mrs. Elias Sory

**Location:** East Legon, Accra, Ghana

**Date of Completion:** 2012



## CONSTRUCTION OF BLOCK FENCE ON A 10 ACRE LAND

**Client:** Academy City College

**Location:** Greater Accra Region Ghana

**Date of Completion:** 2013



## CONSTRUCTION OF A 4 BEDROOM HOUSE WITH AN OUT HOUSE

**Client:** Father Caesar Atuire

**Location:** Central Region Ghana

**Date of Completion:** 2008



# COMPANY REGISTRATION DOCUMENTS

---



**SECTIONS**

Est. 2008

CS196672016	C0007231156
 REPUBLIC OF GHANA	Old TIN 824V033623 Old RGD Number CA-45,182 Old Commencement Date 12/05/2008
<b>The Companies Act, 1963, Act 179</b>	
<b>Certificate To Commence Business</b>	
<b>I hereby certify that</b>	
<b>SECTIONS LIMITED</b>	
having complied with the provisions of Sections 27 and 28 of the Companies Act, 1963, Act 179 is entitled to commence business with effect from 4 <sup>th</sup> day of <b>November 2016</b>	
Given under my hand and official seal at Accra, this 4 <sup>th</sup> day of November 2016	
 For: Registrar of Companies	

C0007231156

  
REPUBLIC OF GHANA

**The Registration of Business Names Act, 1962(No.151)**

**Certificate of Registration**

I hereby certify that the following Subsidiary Business Name  
has been registered under the above-mentioned Act as No.  
**SN001352017**, viz,

**SECTIONS ENGINEERING**

Dated this 29<sup>th</sup> day of March 2017

  
For: Registrar of Companies

CS196672016	C0007231156
-------------	-------------

  
REPUBLIC OF GHANA

Old TIN  
824V033623  
Old RGD Number  
CA-45,182  
Incorporation Date  
09/05/2008

## Certificate of Incorporation

**I hereby certify that**

**SECTIONS LIMITED**

is this day incorporated under the Companies Act, 1963 (Act 179) and that the liability of its members is limited.

Given under my hand and official seal at Accra, this 4<sup>th</sup> day of November 2016

  
For: Registrar of Companies

Permit No. **PC/000777 /B/12-16**

**PERMIT**

**UPSTREAM PETROLEUM SERVICES**

*I hereby certify that*

**SECTIONS LIMITED**

has been duly registered as a Service Company Category **B** in accordance with the Petroleum Commission Act, 2011 (Act 821) and issued a

**PERMIT** to undertake the following:

(a) **Construction / Rehabilitation / Fabrication Works**

(b) **Hospitality Services**

Dated this day December 16, 2016 and valid until December 15, 2017

  
**Chief Executive Officer**  
 Petroleum Commission, Ghana



  
 REPUBLIC OF GHANA



# CORPORATE INFORMATION

---

- Corporation Registered in the Republic of Ghana.
- Company Registration Number: C0007231156
- Subsidiary Name, Sections Engineering:- SN001352017
- Water Resources, Works and Housing Reg. No.: 42566A
- Petroleum Commission of Ghana Permit No.: -PC/000777/B/12-16
- BANKERS: - SOCIETE GENERALE(SG) Ghana



**SECTIONS**

Est. 2008





Est. 2008

## OUR CLIENTS & PARTNERS



**GOODRICH  
GASKET**



Ghana Fort Amsterdam Onlus



**Ministry of Education**  
REPUBLIC OF GHANA



## CONTACT US

Windy Hill Estates  
Pokuase  
Accra-Ghana

info@sectionslimited.com  
www.sectionslimited.com

+233 24 465 9937

P. O. Box 7053,  
Accra - North, Ghana